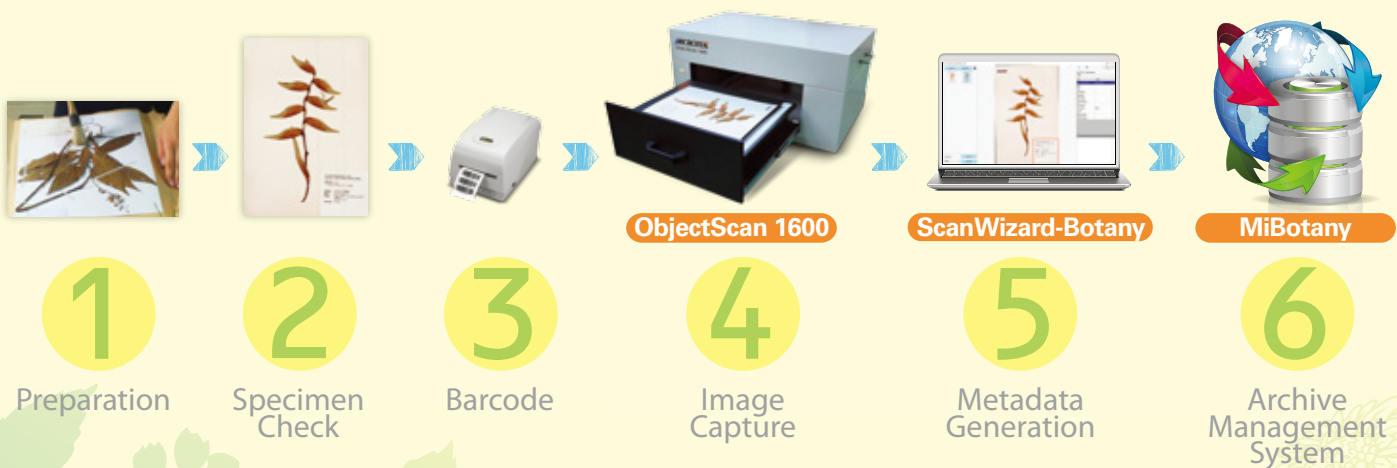


ObjectScan 1600

A Total Solution For Herbarium Specimen Digitization and Archive Management

- On-top scan design protects fragile plant specimen
- 1,600-dpi color CCD provides high-resolution image
- Adjustable scan beds are convenient for objects beyond focus
- Up to +/- 6.5 mm DOF can get clear extended DOF images
- Automated metadata recognition ability
- Image archive and privileged account management system

Recommended Digitization and Management Process of Herbarium Collection



ObjectScan 1600

On-top scan design protects fragile plant specimen

ObjectScan 1600 is characterized as an on-top scan model. This unique mechanistic design guarantees the specimen morphological integration during image capture, eliminating irreversible risks from conventional up-side-down scan or vertically moving scanning station.

1,600-dpi color CCD provides high-resolution image

ObjectScan 1600 has a color linear CCD with resolution up to 1,600 pixels per inch, equaling that of 1Gigabyte. With the built-in 48-bit ADC (Analog to Digital Converter), the whole specimen as well as details of surface textures can be precisely captured and presented in high fidelity format.



The ObjectScan 1600 Scanner

Up to +/- 6.5 mm DOF can get clear extended DOF images

The DOF (Depth of Field) of ObjectScan 1600 is up to +/- 6.5 mm at 300 dpi, which can overcome uneven or protruded parts of plant specimen. This is of especially help on specimen with corns and fruits, preserving and presenting the original characters for academic purpose.



Automated metadata recognition ability

Specimen label information will be recognized and automatically saved titled by herbarium code and specimen serial number in XML format through ScanWizard-Botany. Various options, such as contrast, lightness, and sharpness, are also provided for curators on image adjustment.

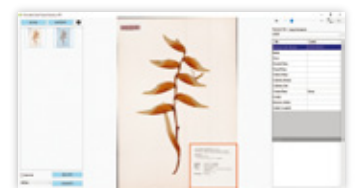


Image archive and privileged account management system

MiBotany is both a web-server system and specimen image authentication database, aiming for being an efficient and integrated multi-functional platform. After hierarchical login-based image quality and metadata profile validation from invited professionals, MiBotany can quickly update the system and immediately make verified specimen access by the public.



Specifications

Type	On-top scan flatbed scanner
Image Sensor	Color Linear CCD
Resolution	1,600 dpi
Optical Density	0.1 to 1.9 D
Depth of Field	+/- 13 mm @ 150 dpi +/- 6.5 mm @ 300 dpi
Light Source	LED
Depth of Color	48-bit (Input) / 24-bit (Output)
Scanning Mode	24-bit Color / 8-bit Grayscale
Scanning Area	330.2 mm x 457.2 mm (13" x 18")
Scanning Speed	12 sec @ 400 dpi, A3 Color (without calibration)

Output File Format	TIFF, JPEG, BMP, PDF
Interface	Hi-speed USB (USB 2.0)
Operating Systems	Windows 7 / 8 / 10 / 11
Dimensions (LxWxH)	875 mm x 525 mm x 382 mm / 34.5" x 20.7" x 15" (foot stands excluded)
Net Weight	71 kg (156.5 lbs)
Voltage	AC 100V-240V, 47-63 Hz, 1.5A max.
Environment	Operating temperature: 41° to 104°F (5° to 40°C) Relative humidity: 20% to 85%

System Requirements

- CD-ROM/DVD-ROM drive (for installing software)
- Color display with 24-bit color output capability
- 4 GB RAM or more
- Intel Core i5 Processor at 3.0 GHz PC or higher with Hi-speed USB (USB 2.0) port
- Windows 7 / 8 / 10 / 11

* For more details on product, please contact your local Microtek sales or dealers.

MICROTEK INTERNATIONAL, INC.

No.6, Industry East Road 3, Hsinchu Science Park, Hsinchu 30075, Taiwan
Tel: +886-3-577-2155 Fax: +886-3-577-2598 www.microtek.com

MICROTEK
SCAN THE WORLD